

If the Glaze is Black/Dark Brown & The Fabric is Red with some inclusions. (Cistercian Ware, 16th-17th Centuries)

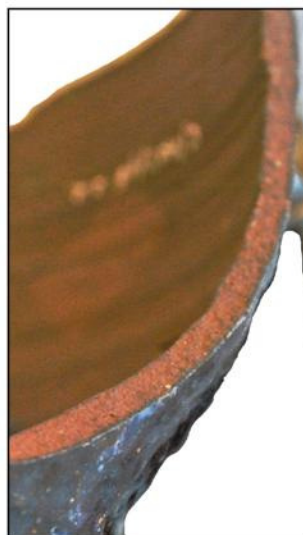
The Glaze

Lead was added to the glaze to produce the typical dark brown metallic-looking effect.

Sometimes there are very small white specs in the dark glaze



This Cistercian Ware tyg (many-handled cup), had 3 handles and was found in 1912 when the moat at Kirby Muxloe Castle was drained.



The Fabric

This is usually red and may have small inclusions in it.



Ticknall Cistercian Ware

This was generally distributed through the markets at the main towns in Leicestershire. There were also some visiting peddlers who sold the pots.

The Leicestershire examples were probably made at Ticknall, Derbyshire; Chilvers Coton near Nuneaton; or in Burslem, Stoke on Trent

All the examples are from the Leicestershire Museums collection.

References: - Laing L (2003) *Pottery in Britain 4000BC to AD1900*, Greenlight Publishing.
Spavold J & Brown S (2005) *Ticknall Pots & Potters*, Landmark Publishing.



Photographed and compiled by
Andy Kirkland